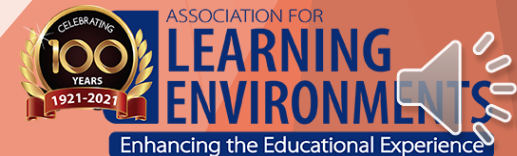


Learning from A4LE Student Design Competitions

What are Good Learning Environments and How Do We Make Them?



A4LE ASSOCIATION DAYS



Introductions



Rachel Pampel, ALEP

- ▶ Education Planner and Researcher



Emma Lineberry

- ▶ Architectural Associate



Dr. Elizabeth Grant, RA

- ▶ Associate Professor, School of Architecture + Design, Virginia Tech; Associate Director, Center for High-Performance Environments

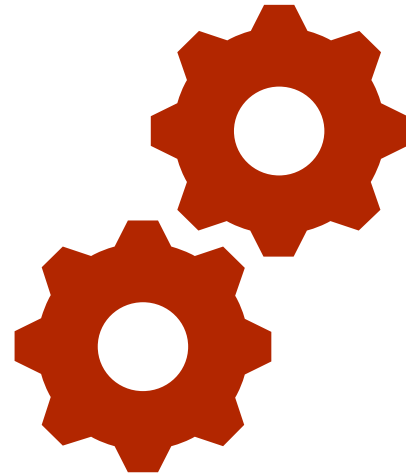


Learning Objectives

- ▶ 1. Understand and be able to apply the format of an educational design workshop based on the case study shared.
- ▶ 2. Understand and be able to apply the themes of good learning environments A4LE jurors have found important throughout the history of the design competition.
- ▶ 3. Obtain the knowledge and resources needed to leverage the format and resources of existing student design competitions to create more opportunities for innovation and discovery.



Education Design - Workshop Format



- ▶ 1 - Knowledge Session
- ▶ 2 - Application Session
- ▶ 3 - Reflection Session



2019 Competition Process

▶ Schedule

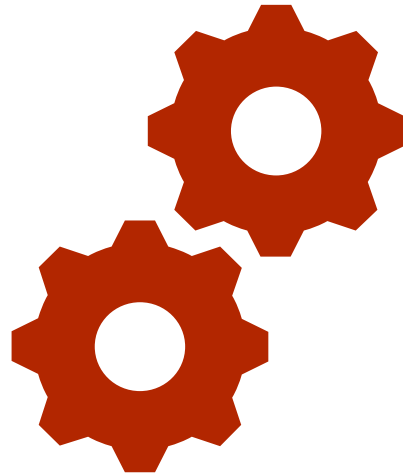
- ▶ 6 weeks
- ▶ Kick-Off, Midterm Pin-Up, Final Pin-Up
- ▶ Presentation at A4LE Virginia Conference

▶ Judging

- ▶ Judges generally take part in the Midterm presentations
- ▶ Criteria set in prompt
 - ▶ Creativity
 - ▶ Learning Enhancement Potential
 - ▶ Educational Functionality and Flexibility
 - ▶ Presentation Quality



Education Design - Workshop Format



- ▶ 1 - Knowledge Session
- ▶ 2 - Application Session
- ▶ 3 - Reflection Session



Themes from Past Competitions

- ▶ Clarity of design idea
- ▶ Design strategies that include a range of scales, from human to site
- ▶ Design informed by community and surrounding geography



2019 Competition Prompt

High School Center for the Performing Arts
Blacksburg, VA

The new “Performing Arts Center” is a collaborative environment intended to enhance learning opportunities for high school students aspiring to further their career in the performing arts arena. These fields include musicians, singers, dancers, actors, and theater design and production. The specialized facility will be a magnet school that serves all local high schools. Since applications are required and certain criteria shall be met, the total student enrollment shall be roughly 500 per semester.

Spaces developed for this school should support and compliment the collaborative effort required by all individuals involved in a theater production. A two-story building is encouraged to generate internal opportunities for light, visual connection of spaces and movement within the building, as well as preserve space for site amenities. Interior spaces should encourage individual, small group and large group creative activity, as well as collaboration between all students. Spaces should allow for impromptu interaction of students from each focus within the program. These areas should be flexible and support a variety of activities. Technology and writing surfaces are encouraged throughout.



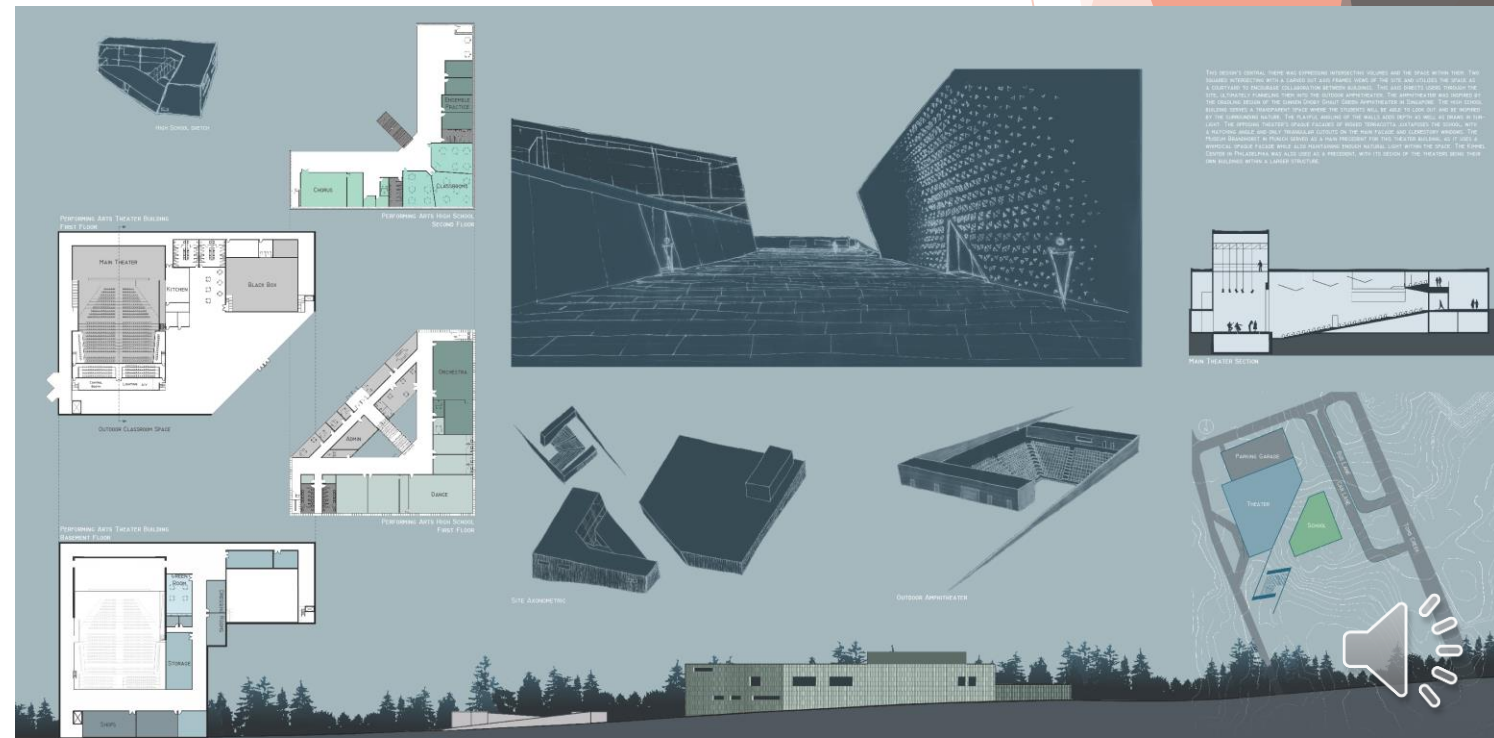
Honorable Mention

Themes

- Building frames the views of the site and utilizes the space

Jury's Comments

- Flexible use of space
- Strong concept and relationship between buildings



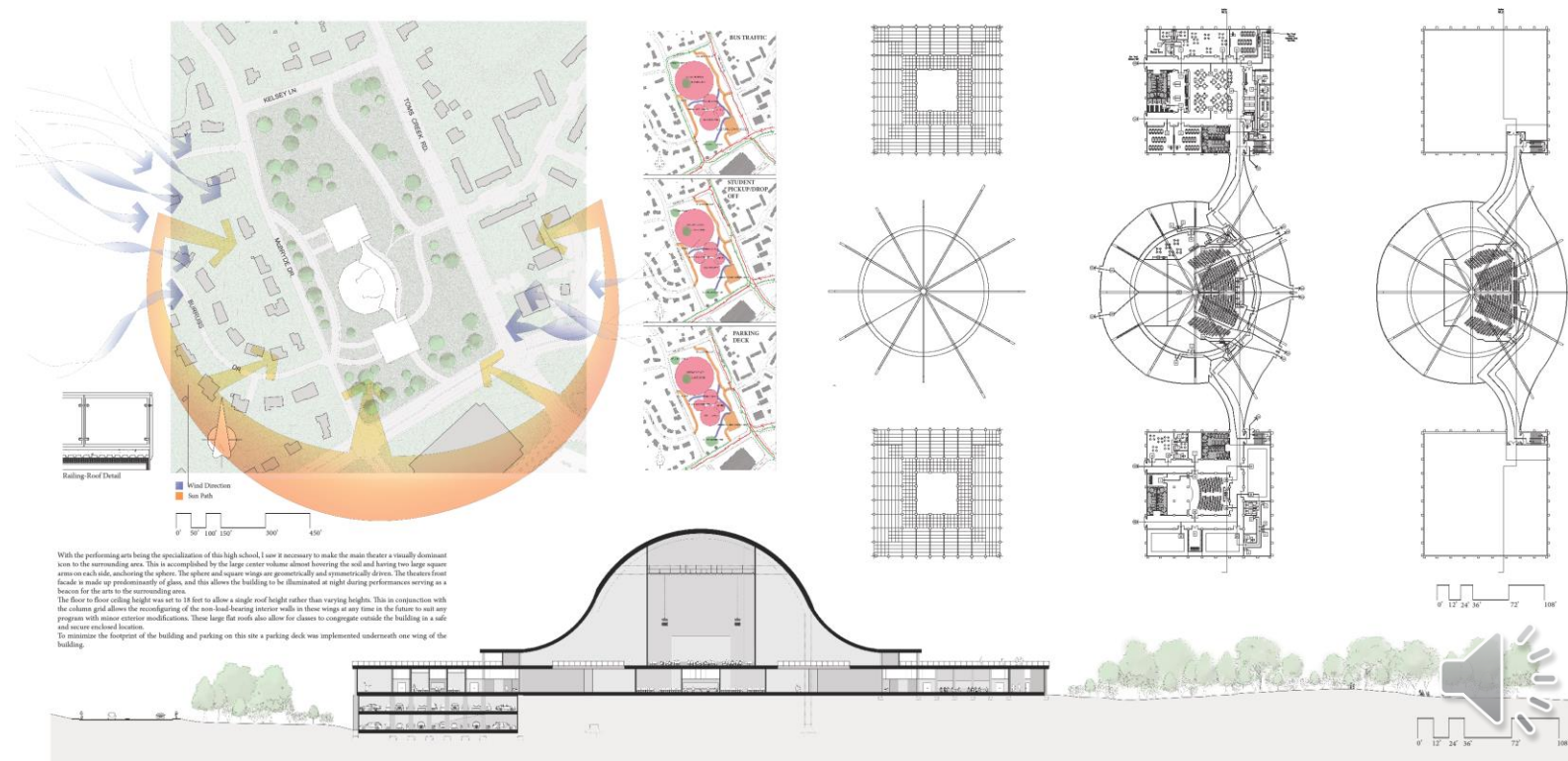
Honorable Mention

Themes

- Main Theater acts as a beacon in form and scale for the community

Jury's Comments

- Theater as an icon
- Circular theater with square wings distinguishing the programs
- Manipulation of ground plane integrated into geography



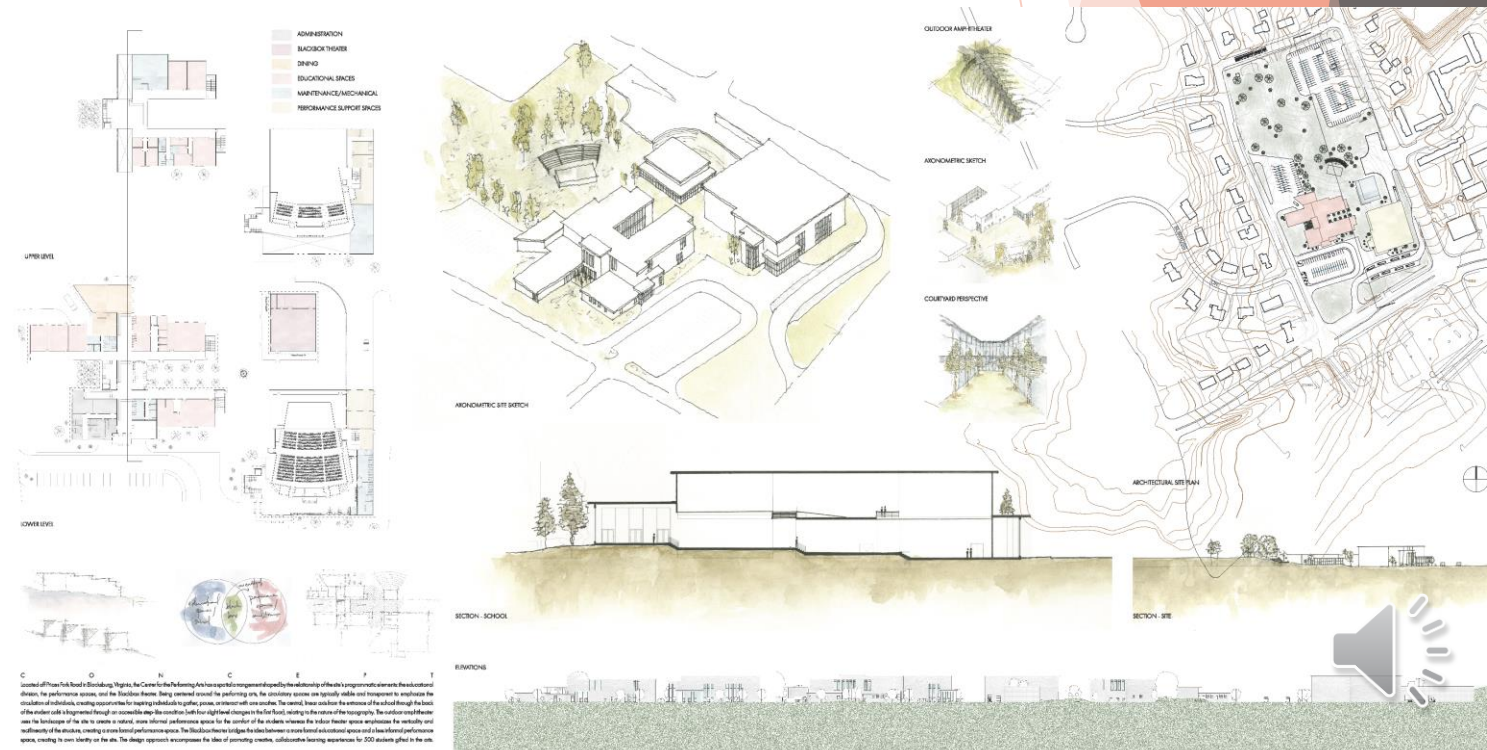
Second Place

Themes

- Program and surrounding environment driving form

Jury's Comments

- Higher education approach
- Separated circulation
- Using material to highlight different uses and transitions between



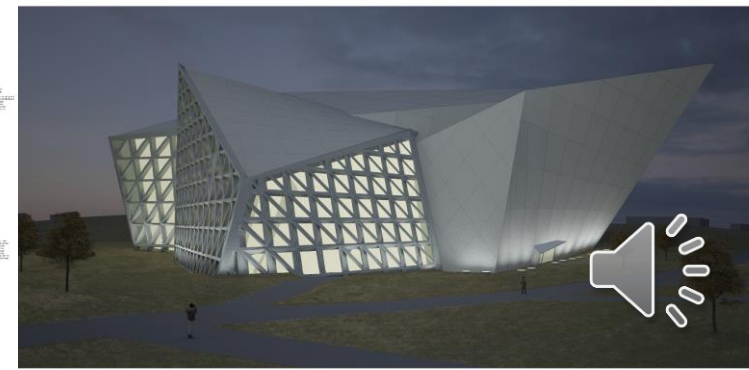
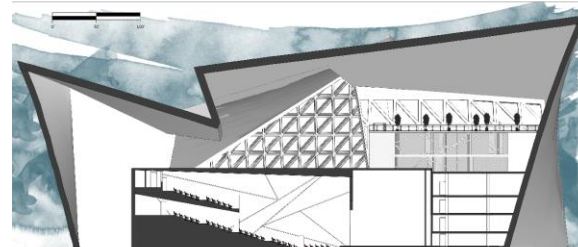
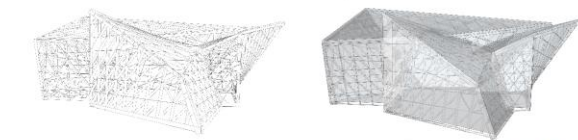
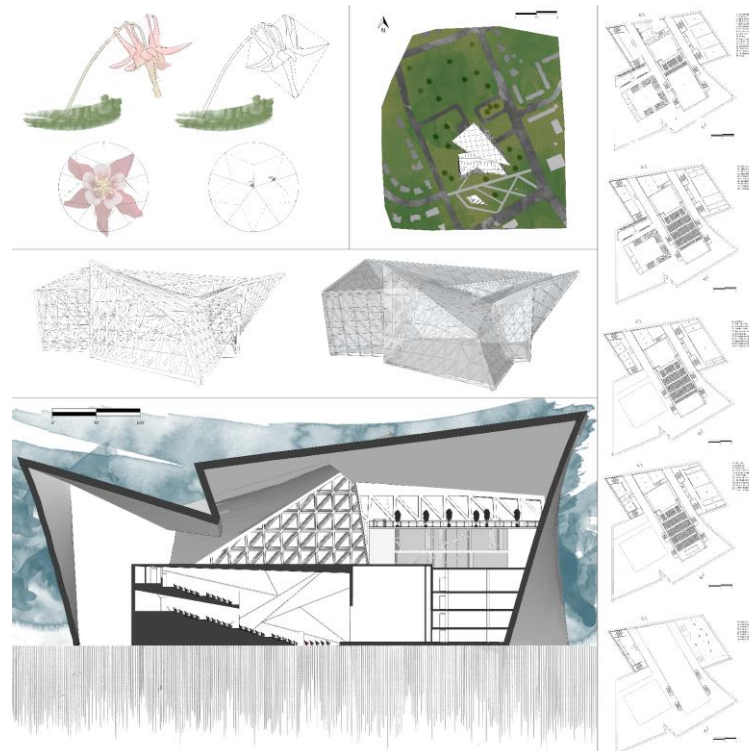
Winner

Themes

- A space that creates the environment for active exchange of energy and attention through the use of angular geometries

Jury's Comments

- Interior angles in response to acoustics
- Interior terraces and plantings dividing space
- Working within a shell



NEXT STEPS

Continuing the Research

- ▶ Engage in the 2022 and 2023 Student Design Competitions
- ▶ Develop data and processes
- ▶ "Quick Guide" to Education Design Workshop
- ▶ Expand presence and share format of design competition



Thanks for joining us!

Please feel free to reach out to Rachel Pampel at rpampel@newmanarchitects.com with any questions or feedback.

